



Venture  
Philanthropy

# Annual Review 2024

LGT Venture Philanthropy



| Forward-looking  
| for generations





“

Through our work with local partners, we have seen how innovations rooted in communities – with their unique insights and creativity – can drive significant change.

H.S.H. Prince Max von und zu Liechtenstein, Chairman LGT



# Contents

|           |  |
|-----------|--|
| <b>4</b>  | Foreword   |
| <b>6</b>  | Who we are   |
| <b>7</b>  | In the words of our partners                               |
| <b>10</b> | Our engaged approach to philanthropy                       |
| <b>12</b> | Examples of transformative impact                          |
|           | Educate Girls  |
|           | Liberia Education Advancement Program                      |
|           | <b>Education</b>   |
| <b>18</b> | Bright futures hanging in the balance                      |
| <b>22</b> | Portfolio spotlight: Harambee Youth Employment Accelerator |
| <b>24</b> | Portfolio spotlight: Kaivalya Education Foundation         |
|           | <b>Health</b>  |
| <b>28</b> | Improving access to health for all                         |
| <b>30</b> | Portfolio spotlight: ARMMAN                                |
| <b>32</b> | Portfolio spotlight: Financing Alliance for Health         |
|           | <b>Environment</b>   |
| <b>36</b> | Our fragile planet   |
| <b>40</b> | Portfolio spotlight: Foundation for Ecological Security    |
| <b>42</b> | Portfolio spotlight: National Geographic Pristine Seas     |
| <b>44</b> | LGT Impact Fellowship                                      |
| <b>48</b> | Learning and creating impact together                      |
| <b>50</b> | Portfolio overview   |

# Foreword

Dear Partners and Friends,

We are pleased to present LGT Venture Philanthropy's 2024 Annual Review. In it, you will find insights, learnings and stories from our partnerships. The review also highlights the progress we have made together with our partners over the last year.

LGT Venture Philanthropy (LGT VP) is an independent charitable foundation established in 2007. It aims to pioneer a more engaged approach to philanthropy, in line with the Princely Family of Liechtenstein's vision of creating lasting positive impact on people and planet.



H.S.H. Prince Max von und zu Liechtenstein, Chairman LGT and Board Member of LGT Venture Philanthropy

Despite significant progress in health, education and environmental outcomes, many communities worldwide still face disadvantages. A billion people still lack physical access to primary healthcare, four in five children in low-income countries cannot read by the age of ten, a million species are currently at risk of extinction and global warming continues – 2023 was the hottest year on record.

There is a growing, global polycrisis underway characterised by polarisation and conflicts, a climate and ecosystem breakdown, excessive government indebtedness, declining official development aid and very challenging demographics. This crisis is amplifying injustices and suffering. However, crises also bring opportunities for change. This paradox inspires urgency, innovation and hope for a new and better era.

We know that effective local solutions to global challenges exist. Through our work with local partners, we have seen how innovations rooted in communities – with their unique insights and creativity – can drive significant change. Yet, many organisations lack the necessary capabilities and resources to scale these solutions. They also often face systemic barriers which prevent them from achieving their full potential.

We believe that by enabling locally rooted organisations to be agents of change, we can most effectively advance in our mission to improve the quality of life of people facing disadvantages, contribute to healthy ecosystems and build resilient, inclusive and prosperous communities. That is why we build long-term partnerships with local organisations that bring about lasting change in their communities and in the systems in which they operate.



Since our inception almost twenty years ago, we have seen important shifts in global philanthropy. Driven by next generation funders and technology, the sector is moving towards greater transparency and deeper participation. We are seeing a growing focus on fairness, building trust in philanthropy and supporting local communities. More organisations are coming together to combine funding, whether from philanthropic, government or private sources, to create lasting, system-wide change.

LGT Venture Philanthropy's 2024–2028 Thriving Communities strategy embraces these trends as we seek to deepen our collaboration with other funders, leverage collective insights and create greater and lasting impact for future generations, together.

Our 2024 Annual Review highlights our partners' solutions and showcases how we create meaningful impact through our engaged philanthropic approach. We hope you find their stories inspiring.



Oliver Karius, CEO LGT Venture Philanthropy

A stylized blue ink signature of H.S.H. Prince Max von und zu Liechtenstein.

H.S.H. Prince Max von und zu Liechtenstein  
Chairman LGT and Board Member of  
LGT Venture Philanthropy

A blue ink signature of Oliver Karius.

Oliver Karius  
CEO LGT Venture Philanthropy

# Who we are

Improving the quality of life of people facing disadvantages.

LGT Venture Philanthropy is an independent charitable foundation established in 2007. With teams in Switzerland, Sub-Saharan Africa and India, we strive to improve the quality of life of people facing disadvantages, contribute to healthy ecosystems, and build resilient, inclusive and prosperous communities.

We do this by strengthening the capabilities of locally rooted organisations that deliver effective, scalable solutions across health, education and the environment, contributing directly to the UN Sustainable Development Goals. We offer flexible, multi-year core funding and build long-term partnerships that nurture and sustain collective impact. Through the LGT Impact Fellowship, we match experienced professionals with portfolio organisations to provide strategic business expertise based on our partners' needs.

## Our values: “ASPIRE”

- **Accountability:** We are honest, transparent and build mutual trust with all stakeholders.
- **Stewardship:** We think long-term in protecting our collective resources for the future.
- **Professionalism:** We continuously learn, aim for excellence and set high standards for scaling impact.
- **Integrity:** We act responsibly and ethically, and focus on creating positive outcomes.
- **Respect:** We value and respect each other, our partners and the communities we serve with humility and compassion.
- **Equity:** We nurture our culture and actions to foster equity, justice, diversity and inclusion for all.



A Living Goods community health worker shares information with a mother and young children in Kenya.

We value organisations that understand the communities they serve, have unique insights into the challenges they face and innovate to embed their models in wider systems. As an engaged partner, we support them so they can deliver solutions that drive wider societal change.

Since 2007, we have supported 79 organisations, matched over 200 fellows and contributed to improving the lives of more than 17 million people.

# In the words of our partners

We deeply value the perspectives and insights of our partners, and are grateful for the opportunity to be part of an engaged network of inspiring organisations and individuals.

To learn more about their experiences so far and what we have achieved together, we spoke to a diverse group of stakeholders, including leaders of our partner organisations and members of the LGT Venture Philanthropy Board. Here is what they had to say:



**Chandrika Bahadur**  
**CEO, The Antara**  
**Foundation**

"Our partnership with LGT Venture Philanthropy has been vital in allowing us to improve maternal and child health in India's marginalised communities. Thanks to the combination of core funding, fellows and strategic expertise, we are able to connect the 'last mile'

community to public health systems and invest in team expertise and innovative solutions that make a significant difference to the health of mothers and children."

have supported over 35 watershed programmes in 20 countries, and we look forward to empowering more local champions to address climate change and water resilience challenges together."

**Reynir Indahl**  
**Founder and Managing**  
**Partner, Summa Equity**  
**and LGT VP Board Member**

"I value the rigor, innovation, strategic insight and value creation that LGT Venture Philanthropy brings to the table. Their engaged approach instils great confidence in the impact we can achieve, and I take pride in being a long-term

partner both as a member of the Board and a funding partner for protecting biodiversity in East African landscapes, a cause I am personally passionate about."



**Justus Raeppe**  
**Director, Nature**  
**for Water Facility**

"I am proud of The Nature Conservancy's collaboration with LGT Venture Philanthropy through the Nature for Water Facility, which delivers local nature-based solutions at landscape scale to protect critical watersheds. Since 2022, we



**Elliott Donnelley II**  
**Vice Chair of Synergos,**  
**Founding General Partner**  
**of the White Sand Investor**  
**Group and LGT VP Board**  
**Member**

"As a champion of community-led, evidence-based interventions and systemic change, LGT Venture Philanthropy is a pioneer in trust-based philanthropy. It's a privilege to serve

on the Board and guide the organisation's strategic choices. I'm excited about the path ahead, especially expanding partnerships with philanthropy leaders and embracing the role of technology in enhancing social outcomes."



**Lilian Kahara**  
**Investment Manager,**  
**LGT Venture Philanthropy**

"As an Investment Manager for LGT VP's environment portfolio in Africa, I am passionate about working with and supporting local organisations dedicated to protecting and regenerating ecosystems through community-led conservation models for sustain-

able impact. It's inspiring to witness the effect these initiatives have on nature, local communities and their livelihoods, and the beautiful coexistence between people and wildlife."

**Archish Gupta**  
**Manager, Venture Philan-**  
**thropy, LGT Wealth India**

"Working closely with a diverse team across continents at LGT Venture Philanthropy enriches my perspective every day. Sharing our challenges, learning what works in other places and gaining insights from different viewpoints is a big part of what makes the

work deeply inspiring, stimulating and rewarding."



You can find more statements from our partners throughout this publication.





Last Mile Health community health assistants embark on home visits in Liberia.

# Our engaged approach to philanthropy

Our strength lies in our tailored, hands-on approach that goes beyond funding.

We believe that for philanthropic funding to be truly transformative, we must strengthen the capabilities of organisations delivering effective and lasting solutions so they can drive significant impact and embed their approaches into wider systems.

Our engaged approach to philanthropy takes inspiration from the principles and rigour of venture capital, and is grounded in the values, commitment and

business acumen of the Princely Family of Liechtenstein and our founder, H.S.H. Prince Max von und zu Liechtenstein.

We are committed to being a long-term partner and recognise the responsibility that comes with supporting growing organisations. Our role is to identify local organisations with proven and scalable solutions and support them to create lasting change. We offer flexible, multi-year core funding along with non-financial strategic support. This includes the LGT Impact Fellowship programme, which matches experienced business professionals with our partner organisations to address their specific needs.

Our partners engage with individuals, communities and governments, and work at the local, regional and national levels. Through our local teams based in India and Sub-Saharan Africa, we help them address systemic barriers to scaling their solutions.

We also leverage our global and regional networks to connect our partners with other funders, organisations and experts doing similar work. Since 2007, we have supported 79 organisations, matched over 200 fellows and helped improve the lives of more than 17 million people.



**Isis Nyong'o Madison**

**Partner, Asphalt & Ink and LGT VP Board Member**

"In the LGT Venture Philanthropy Board and Investment Committee, we ask tough questions about each partnership and ensure they're the right fit for our portfolio strategies. LGT Venture Philanthropy's global perspective, linkages to venture capital approaches and entrepreneurial spirit makes for a rigorous vetting process and this means the committee takes a really strategic and hands-on approach to evaluating each partnership opportunity."





### LGT Venture Philanthropy's Thriving Communities Strategy 2024–2028

After a comprehensive stakeholder and strategy review, the Board of LGT Venture Philanthropy has approved our new five-year strategy, Thriving Communities, for the period from 2024 until 2028. Our primary objective is to invite collaboration with other funders in order to have a greater collective impact.

Our strategy centres on our commitment to effective and engaged philanthropy, and builds on our proven track record. We remain focused on developing partnerships in the health, education and environment sectors. Geographically, our emphasis remains on Sub-Saharan Africa and India, as well as our global partnerships focused on oceans and watersheds.

Moving forward, we will leverage our experience, partnerships and networks to inspire like-minded funders to collaborate for sustainable impact. We will

also evolve the foundation into an impact platform for joint philanthropic risk capital and engagement. This will strengthen our systems-focused approach and encourage collaboration with multiple partners, enabling us to draw on diverse perspectives in addressing complex societal and environmental challenges.

Our Thriving Communities Strategy 2024–2028 marks the beginning of a new and important chapter for us, because now, more than ever, we need to take a long-term perspective and make philanthropic funding truly transformative through collaboration. By working closely together with our partners and fellow funders, we can achieve greater impact, contribute to thriving communities and leave a truly positive legacy.



# Examples of transformative impact

Discover how our collaboration with Educate Girls and the Liberia Education Advancement Program drives impactful, lasting change in communities.

This section highlights two standout examples of the transformative impact we strive to achieve in partnership with locally rooted organisations. Our partnerships with Educate Girls and the Liberia Education Advancement Program (LEAP) exemplify the measurable change we seek to deliver to communities, as well as the scalable, sustainable solutions we aim to foster across our portfolio.



## Safeena Husain

### Founder, Educate Girls

"Our partnership with LGT Venture Philanthropy is over a decade long. It's one of our longest partnerships with any donor. LGT Venture Philanthropy started funding us when we were in two districts when we were just starting out. And today, from two districts, we have grown to 85-plus districts, and our partnership is still thriving. It's been a very, very special partnership for us. It's been, I would say, the fuel behind our strategic approach, and our growth, and our scale, which has led to the impact that it has."

## Educate Girls

Founded in 2007 by Safeena Husain, Foundation to Educate Girls Globally (commonly known as Educate Girls) is an organisation with the mission of ensuring that every girl, even in the remotest parts of India, is enrolled in school and receives a quality education. Our partnership with Educate Girls began in 2011, and over the years, our support has helped the organisation grow and achieve the kind of long-term, transformative impact we seek in all of our partnerships.

## Breaking down social barriers

Educate Girls was born from a deep understanding of the systemic barriers that keep girls from accessing education in India's most vulnerable communities. For a plethora of reasons, including poverty, societal norms and child marriage, parents in rural areas are more likely to prioritise boys' education over girls'. Educate Girls bridges India's gender gap by working to ensure that girls living in rural and marginalised regions not only enrol in school but complete their education armed with the necessary skills and knowledge to build brighter futures.

Studies have shown that investing in girls' education is beneficial for several reasons.<sup>1</sup> When they grow up, girls who have received an education tend to have higher incomes, fewer and healthier children, and better health outcomes. By working tirelessly to enrol girls in schools, Educate Girls champions the rights of girls in India and plays a crucial role in advancing the country's developmental aspirations.

<sup>1</sup> World Bank, 'Girls' Education,' accessed 3 October 2024. [worldbank.org/en/topic/girlseducation](https://worldbank.org/en/topic/girlseducation)

Educate Girls' model involves first encouraging parents to send their daughters to school, which often means overcoming cultural and logistical barriers to enrolment. Once the girls are in school, the focus shifts to keeping them there, ensuring they stay engaged and continue their education. The organisation then expands its efforts to improve educational outcomes for all students, both girls and boys, by enhancing the quality of teaching and learning within schools. This comprehensive approach helps create an environment where every child has the opportunity to succeed.

### **A partnership with a transformative impact**

LGT Venture Philanthropy began working with Educate Girls in 2011, and was its second institutional funder. The organisation's scale and impact has grown significantly since those early days, with the number of girls enrolled in schools growing from 3000 in 2011 to 411 000 in 2024; and the number of schools engaged increasing from 500 to over 51 000 during that same period. As of 2024, Educate Girls has mobilised over 1.8 million girls for enrolment, supported over 2.2 million students with remedial learning and trained 437 000 adolescent girls in life

skills. And it has big plans for the future: in the next ten years, it aims to reach ten million learners.

Our support for Educate Girls has been broad, and includes providing long-term core funding and strategic advice, as well as sharing technical expertise. We also served as a key partner in the creation of the world's first education development impact bond, launched by Educate Girls in 2015.

Other examples of our support include helping the organisation recruit 13 LGT Impact Fellows, who significantly enhanced its capacity in key areas such as communications, data science and fundraising. In addition, we facilitated introductions to key members of the fundraising community, resulting in the acquisition of new donors, including the Qatar Foundation.

Educate Girls demonstrates that when given equal opportunities, girls can become agents of change. At LGT Venture Philanthropy, we are not only honoured to contribute to this journey but inspired by the transformative power of education. Our ongoing commitment ensures that together, we continue to open doors to opportunity, dignity and equality for the next generation.



### Liberia Education Advancement Program

The Liberia Education Advancement Program (LEAP), previously known as Partnership Schools for Liberia, is a groundbreaking public-private partnership aimed at improving public school education in Liberia. After eight years of partnership, LEAP graduated from the LGT Venture Philanthropy portfolio in 2024.

We are proud to have supported LEAP's journey to scale, collaborating closely with Liberia's Ministry of Education and several other partners. The programme has been a remarkable success and is now a cornerstone of Liberia's 2024–2028 education strategy. LEAP, which reaches over 125 000 children a year in what is one of the world's poorest countries, is as a powerful example of our long-term commitment to creating meaningful impact through our partner organisations in under-resourced settings.

### Supporting educational transformation in Liberia

Established in 2016, LEAP is a public-private partnership between the Government of Liberia, international funders and a consortium of non-state school operators designed to provide tuition-free public education from early childhood through grade nine. LEAP has been at the forefront of addressing Liberia's educational challenges, including underfunded schools, high dropout rates and teacher shortages. By working with non-state school operators, LEAP has introduced innovative approaches to enhance learning outcomes for students in public schools.

LGT Venture Philanthropy had been a partner to LEAP since its inception in 2016, as part of our commitment to fostering scalable and impactful innovation in education. Between 2016 and 2024, we contributed

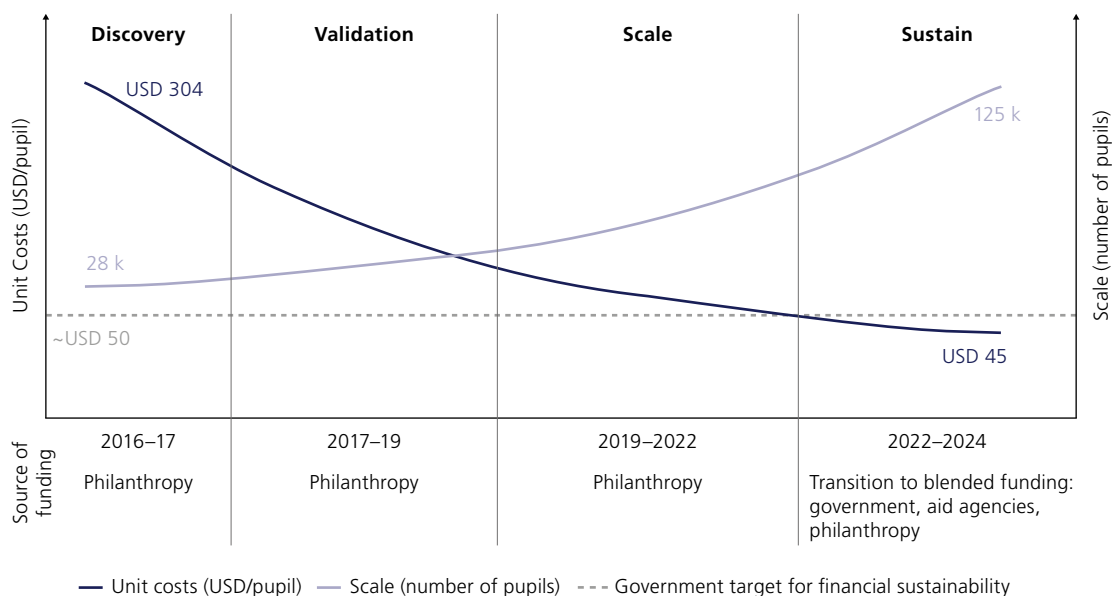
a total of over USD 6 million to LEAP, which is around 14 % of the total funding the programme has mobilised since inception. Over the years, our role in LEAP expanded into a multifaceted partnership as we facilitated collaborations, engaged in advocacy and served as an active voting member on the Local Education Group, a key committee tasked with aligning education reform efforts with government priorities in Liberia.



Young school children attend class in a LEAP-supported school in Liberia.



### LEAP's journey to achieving financial sustainability and scale (illustrative)



During our partnership, LEAP expanded its proven quality education model across urban and rural areas from 94 schools in 2017 to 475 schools in 2024, reaching nearly 20 % of all public primary schools in the country. Through LEAP, per student costs dropped by 85 % from USD 304 in 2017 to USD 45 in 2024, and are now well below the government's financial sustainability target of USD 50 per student. Most importantly, independent evaluations show that LEAP has improved learning outcomes, with LEAP-supported students outperforming peers by 1⅓ to 2½ years of schooling.

Having graduated from our portfolio in 2024, the programme is poised to sustain its growth trajectory with support from the Liberian government and local expertise. This is an excellent example of how philanthropic risk capital can catalyse change by coming in early and scaling high-impact models that would not normally be funded by government or the private sector. We are proud to have contributed to this transformative journey and remain committed to supporting education initiatives that create lasting positive change.

# Education







# Bright futures hanging in the balance

Expanding access to learning through schooling and skilling.

Young people are critical to society and will one day shape the world we live in. However, many children and youth do not have access to a quality education – a pivotal factor in helping them realise their full potential. In fact, in 2020, over a quarter of a billion school-aged children were not attending school. The majority lived in Sub-Saharan Africa and Southern Asia,<sup>1</sup> our two focus regions.

These educational gaps have long-term consequences, with much of Sub-Saharan Africa and India trailing global averages in key indicators of educational achievement. One of the most alarming signs of this disparity is the rise in learning poverty. In low- and middle-income countries, an estimated 70 % of children cannot read a simple text by the age of 10.<sup>2</sup> In contrast, only 10 % of children in Europe and Central Asia face similar challenges at that age.<sup>3</sup> This stark discrepancy reveals not only a crisis in basic education but also a widening chasm between the promise of youth and the tools they need to realise their potential.

As these children grow into adolescence, the challenges become even more pronounced. Both Sub-Saharan Africa and India are experiencing a drastic youth bulge, which refers to a rapid expansion of the

young population relative to the rest of the population. In 2019, individuals aged 15–24 in Sub-Saharan Africa accounted for 19 % of the global youth population. By 2030, young Africans are projected to represent 42 % of the world's youth.<sup>4</sup> Without a commensurate increase in adequate education, employment opportunities and social support, this surge will put young populations at risk of widespread unemployment, social unrest and economic instability.



## Rethabile Motaung

### SmartStart Franchisee

"I started working as a SmartStart franchisee in 2019, which meant I could set up a daycare centre offering quality early learning for young children in my community. Before then, things were very hard, I was unemployed and dependent on my children's social grants. Now I'm glad to say I'm a businesswoman earning my own money, and I am so happy about what SmartStart does for women. We don't have to depend on our partners, and it boosts our confidence as women."



## Our strategic approach

Our education strategy focuses on three areas where we and our partners see the highest potential for impact: early childhood education, primary education and youth skilling. We take a multi-level approach, with the organisations we support intervening at the community level, within schools, classrooms and other learning environments, and at the government level.

Research shows that investing in early childhood education yields significant long-term and systemic returns through improved learning outcomes, increased earnings potential and enhanced social skills.

These benefits translate to an annual return on investment of 7–10 %, driven by increased academic and career achievement and reduced costs in areas like remedial education, healthcare and the criminal justice system.<sup>5</sup> For example, by focusing on this critical stage in children’s development, our portfolio partners SmartStart and Lively Minds are ensuring that children in low-income and underserved communities in Sub-Saharan Africa have access to quality early childhood learning programmes.

Access to quality primary education is essential to building children’s foundational literacy and numeracy skills, which pave the way for academic success

<sup>1</sup> United Nations. “Goal 4: Ensure Inclusive and Equitable Quality Education and Promote Lifelong Learning Opportunities for All.” United Nations Statistics Division, 2017. [unstats.un.org/sdgs/report/2017/Goal-04](https://unstats.un.org/sdgs/report/2017/Goal-04)

<sup>2</sup> World Bank. “70 % of 10-Year-Olds now in Learning Poverty, Unable to Read and Understand a Simple Text.” World Bank, 23 June 2022. [worldbank.org/en/news/press-release/2022/06/23/70-of-10-year-olds-now-in-learning-poverty-unable-to-read-and-understand-a-simple-text](https://worldbank.org/en/news/press-release/2022/06/23/70-of-10-year-olds-now-in-learning-poverty-unable-to-read-and-understand-a-simple-text)

<sup>3</sup> UNICEF. The State of Learning Poverty: 2022 Report. United Nations Children’s Fund, 2022. [unicef.org/media/122921/file/StateofLearningPoverty2022.pdf](https://unicef.org/media/122921/file/StateofLearningPoverty2022.pdf)

<sup>4</sup> United Nations Development Programme (UNDP). Youth in Africa 2023: Trends, Challenges and Opportunities. United Nations Development Programme, May 2023. [undp.org/sites/g/files/zskgke326/files/2023-05/undp-africa-youth-in-africa-2023-EN.pdf](https://undp.org/sites/g/files/zskgke326/files/2023-05/undp-africa-youth-in-africa-2023-EN.pdf)

<sup>5</sup> Heckman Equation. Invest in Early Childhood Development: Reduce Deficits, Strengthen the Economy. Heckman Equation, n.d., [heckmanequation.org/resource/invest-in-early-childhood-development-reduce-deficits-strengthen-the-economy/](https://heckmanequation.org/resource/invest-in-early-childhood-development-reduce-deficits-strengthen-the-economy/) Accessed 14 September 2024.

and break down socio-economic barriers that limit children's potential. In India, Peepul, which joined our portfolio in 2024, and Kaivalya Education Foundation are dedicated to improving children's literacy and numeracy skills by engaging with decision-makers across different levels of the public school system.

In regions where youth unemployment rates are high, investing in youth skilling programmes helps ensure that young people are better prepared to enter the job market. Youth skilling reduces unemployment, fosters entrepreneurship and promotes economic stability. Harambee Youth Employment Accelerator and Quest Alliance are two examples of our partners driving systemic change to help youth get a head start in challenging local job markets.

### Early childhood development

When it comes to education, one of our key areas of focus is expanding children's access to early learning programmes, particularly in underserved communities. However, while this is essential for fostering children's development, it is not sufficient on its own. According to the World Health Organization's Nurturing Care Framework for Early Childhood Development, children's well-being and growth depend on a combination of factors including health, nutrition, responsive caregiving and safety, in addition to early

learning opportunities. If these are not addressed, the potential for children to grow and thrive is severely limited.

As part of our 2024–2028 Thriving Communities strategy, we are therefore expanding our approach and are focusing on supporting children aged zero to eight through early childhood development (ECD) programmes that integrate health, nutrition, emotional well-being and education, thus taking a more holistic approach to their development and well-being.

In India, the government has reaffirmed its commitment to early childhood education by prioritising access to and the quality of early childhood education with its 2020 National Education Policy. In addition, the emergence of new NGOs is raising the capacity of local Anganwadi centres (rural childcare centres that provide nutrition and health services as well as early learning programmes). These developments reflect a growing political commitment to providing early childhood care to children in India's most vulnerable communities. Building on these trends, we aim to collaborate with partners in India's ECD sector to create integrated solutions and work with other funders as we explore new collaborative approaches. This will remain a key focus area in our future efforts.







Young boys smile as they play in a community-led early learning centre supported by Lively Minds in Ghana.

# Harambee Youth Employment Accelerator

For higher youth employment and better life prospects in Africa.

At 55 %, South Africa has one of the highest youth unemployment rates in the world. Young South Africans face significant challenges in finding work, leaving them especially hard-hit by the unemployment crisis.

Harambee Youth Employment Accelerator, a non-profit organisation founded in 2011, is tackling youth unemployment with innovative solutions. Working with partners from government, the private sector, civil society and over four million young people, Harambee uses cutting-edge technology to unlock opportunities and remove barriers that keep millions of youths unemployed.

Its flagship tool, SA Youth, is a free online platform that has supported more than 4.4 million young people in their work-seeking journeys and enabled 1.4 million opportunities to date. The platform also

provides job seekers with digital skills, interview tips and other useful resources to help them find employment. Insights from SA Youth users help Harambee better understand the obstacles young people face, allowing the organisation to advocate for solutions that boost job growth in key industries.

LGT Venture Philanthropy has partnered with Harambee since 2019, providing core funding and building organisational capacity through the placement of four LGT Impact Fellows.

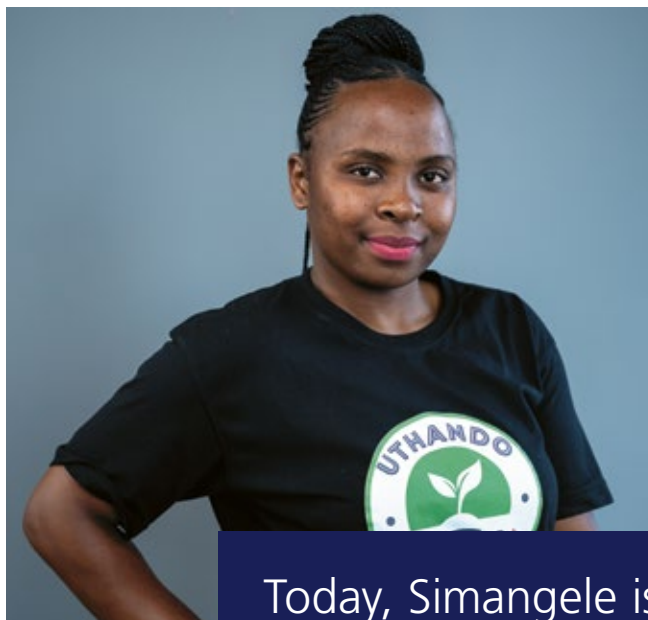




### Simangele's story

Simangele Sithole is a 25-year-old entrepreneur from Pietermaritzburg, in the South African province of KwaZulu-Natal. After a period of unemployment and losing her mother, she found purpose in her passion for agriculture, particularly vegetable farming. However, as she began to pursue her dream of starting a vegetable farming business, she faced significant market challenges that seemed insurmountable to her at the time.

Simangele's fortunes changed after she discovered the Harambee Youth Employment Accelerator through the SA Youth platform. She joined one of Harambee's initiatives, the Roots Agripreneurial Project, which aims to empower young people from rural communities to start and sustain agricultural businesses. Simangele received training in technical farming, agribusiness, climate-smart agriculture, financial literacy and life skills. With this valuable support, Simangele was able to successfully launch her vegetable business.



Today, Simangele is celebrated in her community as a young business leader.

Today, Simangele is celebrated in her community as a young business leader. Her determination and resilience have helped her overcome numerous challenges, and she is now focused on expanding her business and becoming one of KwaZulu-Natal's leading female farmers. ◆





# Kaivalya Education Foundation

Strengthening the public education system to improve student literacy and numeracy in India.



Children in a school supported by Kaivalya Education Foundation are guided through a meditation session.

LGT Venture Philanthropy has partnered with KEF since 2023, and has provided the organisation with core funding and strategic support to implement its programmes. Kaivalya Education Foundation operates across 27 states and two Union Territories in India, working with approximately 387 869 schools and engaging around 40 893 public education officials. It influences over 1.5 million teachers and impacts the education of more than 426 million children, driving systemic change across India's public education system.

One key element of KEF's model is that it leverages public schools as "innovation hubs", where they introduce new approaches in school leadership or pedagogy. If these approaches prove successful, they are scaled at the district level, catalysing learning outcomes for millions of children.

India's public education system faces significant challenges, including disparities in quality, inadequate resources and a lack of skilled leadership. Kaivalya Education Foundation (KEF) was founded in 2008 to address these systemic issues. KEF focuses on transforming India's public education ecosystem by improving processes, leveraging technology and building leadership capabilities. KEF works directly with community members, school headmasters, education administrators and district officials to give them the skills needed to drive sustainable, systemic change across schools and education systems in India.

One important innovation introduced by KEF is the Social Emotional and Ethical Learning (SEEL) curriculum, an educational framework that integrates emotional intelligence, ethical decision-making and social skills into the learning process. This supports students in their intellectual, emotional and cognitive development, and encourages them to be more compassionate and aware of their personal leadership skills. Since its introduction as a pilot in the 2015–2016 school year, the SEEL curriculum has led to an 11 % improvement in various competency indicators among children, resulting in an overall enhancement in academic performance. SEEL has now been introduced in seven states in India.

### Palak's story

Palak, a 14-year-old girl from Jhunjhunu district in the Indian State of Rajasthan, recounts the impact SEEL has had on her life:

"Back when I used to live in Delhi and was studying in my old school, I didn't really understand my emotions. Back then, when I used to get angry, I would be very rude to others, and I didn't know how to manage my emotions. My family left Delhi to move

here, and moving is always stressful. However, when I arrived here at this school, I learned about SEEL. I learned many SEEL activities which helped me identify my emotions and control my temper. And I became friendlier. I used to miss my old friends from Delhi but learning about SEEL helped me make new friends. I'm still in touch with my old friends from Delhi, but I like my new friends as well, and all this is thanks to SEEL."

Palak's school principal, Principal Suman, notes that since Palak was introduced to SEEL, she has transformed from a shy student into a more engaged and active participant in school. Her academic performance has also improved significantly. And to Palak's mother's delight, Palak has also started implementing the SEEL techniques she learned at school at home, reflecting her growth and confidence. ◆



Palak transformed into a more engaged and active participant in school.

# Health







# Improving access to health for all

Expanding access to health through community-based healthcare.

Over the past few decades, significant progress has been made in improving global health outcomes, with notable advancements in areas such as child and maternal mortality.

Since 2000, the global under-five mortality rate has more than halved<sup>1</sup>, and maternal mortality has seen a notable decline of 38 %.<sup>2</sup> However, despite these achievements a harsh truth persists: the most vulnerable communities remain left behind. In regions where healthcare is sparse and unevenly distributed, countless lives continue to be at risk due to a lack of access to affordable, quality health services. In Sub-Saharan Africa and India, the disparities in healthcare access are profound. For example, across Sub-Saharan Africa there are only 0.2 physicians per 1000 people – far below the global average of 1.6 physicians per 1000 people.<sup>3</sup> And while 65 % of India's population resides in rural areas, only 37 % of health workers in the country serve these areas, leaving many communities critically underserved.<sup>4</sup>

## Our strategic approach

Expanding access to primary healthcare is key to improving health outcomes in underserved communi-

ties. Our health strategy is informed by a strong body of evidence demonstrating that community health workers (CHWs), embedded in the communities they serve, are one of the most effective ways to drive access to primary healthcare and save lives. Research shows that if governments hire, train and equip high-performing teams of CHWs to provide the 30 most essential primary health services in the 73 low and middle-income countries with the highest burden of preventable deaths, at least 30 million additional lives could be saved by 2030.<sup>5</sup>

LGT Venture Philanthropy partners with organisations in Sub-Saharan Africa and India that are dedicated to promoting and sustaining community-based healthcare. Our strategy considers the contextual differences that exist in both of these regions, and we pursue a tailored approach for each.

In Sub-Saharan Africa, there is a pressing need to recruit and train more CHWs to address gaps in healthcare access. For example, our partner organisations Muso and Last Mile Health work with governments to ensure that CHWs are recruited, trained and fairly compensated. In India, where there is already a robust

<sup>1</sup> UNICEF. (2024). Levels and Trends in Child Mortality: Report 2024. UNICEF Data. Retrieved from [data.unicef.org/resources/levels-and-trends-in-child-mortality-2024](https://data.unicef.org/resources/levels-and-trends-in-child-mortality-2024)

<sup>2</sup> UNICEF. (n.d.). Maternal mortality. Retrieved November 14, 2024, from [data.unicef.org/topic/maternal-health/maternal-mortality/](https://data.unicef.org/topic/maternal-health/maternal-mortality/)

<sup>3</sup> World Bank. (n.d.). Physicians (per 1000 people). Retrieved 11 October 2024, from [data.worldbank.org/indicator/SH.MED.PHYS.ZS?locations=ZG](https://data.worldbank.org/indicator/SH.MED.PHYS.ZS?locations=ZG)

<sup>4</sup> Karan, A., Negandhi, H., Hussain, S., et al. (2021). Size, composition and distribution of health workforce in India: why, and where to invest? *Human Resources for Health*, 19(1), 39. doi.org/10.1186/s12960-021-00575-2

<sup>5</sup> Chou, V. B., Friberg, I. K., Christian, M., Walker, N., & Perry, H. B. (2017). Expanding the population coverage of evidence-based interventions with community health workers to save the lives of mothers and children: an analysis of potential global impact using the Lives Saved Tool (LiST). *Journal of Global Health*, 7(2), 020401. doi.org/10.7189/jogh.07.020401





presence of CHWs, the focus is more on enhancing the quality and effectiveness of health services. Our partners ARMMAN and The Antara Foundation use mobile technology and other innovative tools to ensure CHWs are equipped to provide health services as effectively and efficiently as possible.

In addition to improving healthcare delivery on the ground, we also support organisations strengthening the capacities of ministries of health to roll out national community health strategies while advocating for increased and sustained financing for CHWs. For example, AMP Health and Financing Alliance for Health (FAH) are partnering with a combined total of 16 African national governments to boost the robustness of national community health systems. Two of our partners, FAH and Last Mile Health, are founding members of Africa Frontline First, a major pan-African coalition working to close the community health funding gap.

In 2024, we welcomed a new organisation to our health portfolio: Living Goods. Operating in Kenya, Uganda and Burkina Faso, Living Goods empowers CHWs to deliver essential health services by providing them with mobile technology, tools and compensation.



## Ari Johnson

### MD, CEO Muso

"Every year, millions of people die of treatable diseases because health care does not reach them fast enough. At Muso, we support nurses, midwives, doctors and community health workers to provide rapid care to those who need it the most. To reach patients fast and save lives, we meet patients where they are with care, with no out-of-pocket fees. Over the past three years, LGT Venture Philanthropy's funding has allowed us to expand in Mali and Côte d'Ivoire, creating a blueprint for community-led universal healthcare."



# ARMMAN

Using mobile technology to empower community health workers and save lives in India.

Founded in 2008 in India, ARMMAN envisions a world where every mother is empowered, and every child enjoys optimal health. A pioneer in mobile health, ARMMAN leverages mobile technology and existing health worker networks and health infrastructure to empower communities, promote health-seeking behaviours, and enhance access to critical healthcare information and services.

Since its inception, ARMMAN has made significant strides in raising awareness and improving access to maternal and neonatal health services. In partnership with India's Ministry of Health and Family Welfare, ARMMAN launched Kilkari – the world's largest mobile-based maternal messaging programme. Kilkari has reached 51 million women and children across 23 states in India, with 3.5 million active users today. Another one of ARMMAN's programmes,

Mobile Academy, provides mobile-based refresher training for India's Accredited Social Health Activists (ASHAs) and other frontline health workers. Mobile Academy has successfully trained 449 000 frontline health workers on life-saving preventive health practices and maternal and neonatal health essentials.

Since 2020, we have supported ARMMAN through a multi-year grant, the recruitment of an LGT Impact Fellow to enhance their marketing and branding efforts, and shared our network to help foster strategic partnerships. Our support for ARMMAN has contributed to the roll-out of an improved version of Kilkari (Kilkari 2.0), which, as of the third quarter of 2024, has been piloted in three Indian states. The programme aims to expand its reach to cover all 28 states and Union Territories across India by 2026.



### Anita's story

In the heart of Krishnagiri, a village nestled in the Kurnool district of the state of Andhra Pradesh in India, Anita, a first-time mother to a lively one-and-a-half-year-old boy, has become a pillar of support for women in her community. Her journey to empowerment began with the Kilkari call service, a life-changing resource that helped her overcome her initial fears and uncertainties about her first pregnancy.

Without prior knowledge about essential prenatal and postnatal care, Anita found herself unsure of whom to turn to for guidance. Traditional support systems were not available, and she was reluctant to seek advice from her extended family or neighbours. However, Kilkari's regular calls provided her with essential health insights and helped her understand key practices like preventing anaemia through a diet rich in iron. Through this service, Anita not only gained confidence in caring for her own health but also learned how to support her baby's well-being.

What started as a personal resource quickly turned into a community mission. Today, Anita passionately shares the benefits of Kilkari with her friends, family and neighbours, spreading awareness about maternal and child health within her social circles. ♦



For Anita, what started as a personal resource quickly turned into a community mission.



# Financing Alliance for Health

Helping governments strengthen the financing of public health systems in Africa.

Financing Alliance for Health (FAH) was founded in 2015 with the goal of addressing systemic financing challenges to scaling primary and community health programmes across Sub-Saharan Africa. Despite the recognised impact of investing in community health systems, Sub-Saharan Africa faces an estimated annual funding gap of USD 4.4 billion for primary and community health. By fostering collaboration between governments, non-profit organisations and private sector partners, FAH is working to create a reality where domestic and international funders prioritise community health as a critical investment.

LGT Venture Philanthropy has supported FAH since 2020, providing core funding and enhancing organisational capacity through the placement of four LGT Impact Fellows who have contributed to FAH's growth and impact. In October 2024, we extended our partnership with FAH through a new, three-year grant, highlighting our strong belief in their unique position in building effective and sustainable health systems across Africa.

To date, FAH has engaged with 22 national and sub-national governments across 16 countries to develop innovative financing solutions that can sustain national health programmes in the long-term, accelerating progress towards universal health coverage. FAH has successfully mobilised USD 32.5 million in domestic resources and USD 500 million through ecosystem contributions for health systems, upskilled over 4200 community health leaders in health financing and supported the recognition by African governments of over 450 000 CHWs as a key component of public health services.







FAH's involvement has opened up new avenues for resource mobilisation.

### FAH in Sierra Leone

FAH works closely with ministries of health to design and implement policies that enhance financing and support for community health systems. In Sierra Leone, FAH's support led to the development of the 2025 Annual Work Plan for the Ministry of Health as well as a key policy brief on enhancing investments for primary healthcare.

Dr Francis Smart, Director of Policy Planning and Information at Sierra Leone's Ministry of Health and Sanitation, says that FAH's involvement has opened

up new avenues for resource mobilisation: "The development of the policy brief on enhancing investments for primary healthcare in Sierra Leone, with the support of FAH, is an eye-opener to the potential sources of domestic resources which could be mobilised for primary healthcare. We are very keen on working with FAH to support the Ministry of Health in the development of a policy brief on human resources for health in Sierra Leone." ◆

**Financing Alliance  
for Health**

# Environment









# Our fragile planet

Our planet faces crises on multiple fronts that demand immediate action.

The worsening climate crisis is not just a distant threat, it has far-reaching consequences that are already manifesting today in alarming ways.

On land, species extinction is accelerating at 100 to 1000 times the natural rate, with one million species at risk of extinction in the coming decades.<sup>1</sup> Deforestation, habitat destruction and the degradation of critical landscapes are threatening the livelihoods of indigenous and rural communities who depend on the land for food and income. Over the past 30 years, the rising temperatures and acidification in our oceans have led to the loss of over half of the world's coral reefs – critical ecosystems that sustain roughly 25 % of all marine species.<sup>2</sup> This destruction not only endangers marine biodiversity but also disrupts industries such as fishing and tourism, which millions of people depend on for their survival.

The interconnected crises of climate change, poverty and biodiversity loss create a vicious cycle, where climate-driven environmental degradation worsens poverty, forcing vulnerable communities to adopt unsustainable livelihood practices that further damage

ecosystems and harm the climate. As these crises escalate, we find ourselves on the brink of different tipping points that if reached, could mean the damage to our planet's climate, ecosystems and biodiversity will be irreversible if we do not take urgent, coordinated action.



## Anga Kaleyia

### **Fisherman and Dakshin collaborator**

"When Dakshin Foundation arrived in Ganjam, we were in conflict with mechanised trawlers that were encroaching on our fishing grounds, destroying habitats and catching a lot of juvenile fish. Dakshin helped us put our concerns forward to government bodies and we can now participate in government decision-making on managing fishing resources. Dakshin is also helping us tackle other challenges we face, such as adapting to climate change."

<sup>1</sup> United Nations. (2019, 6 May). Nature's decline is unprecedented, according to UN report. United Nations. [un.org/sustainabledevelopment/blog/2019/05/nature-decline-unprecedented-report/](https://un.org/sustainabledevelopment/blog/2019/05/nature-decline-unprecedented-report/)

<sup>2</sup> Coral Reef Rescue Initiative. (n.d.). Coral reef crisis. Coral Reef Rescue Initiative. [coralreefrescueinitiative.org/coral-reef-crisis](https://coralreefrescueinitiative.org/coral-reef-crisis)

We are, however, also seeing some promising international commitments aimed at overcoming these critical challenges. The Paris Agreement, for example, which aims to curb emissions and limit global warming to below 2° C, entered into force in 2016. Similarly, the 30x30 target of the Kunming-Montreal Global Biodiversity Framework, which seeks to protect 30 % of the Earth's land and oceans by 2030, also provides a global framework for collaboration to address and mitigate the impacts of climate change and biodiversity loss.

### Our strategic approach

At LGT Venture Philanthropy, our environmental strategy focuses on protecting and restoring ecosystems through scalable conservation models for both land and marine environments, with an emphasis on natural climate solutions which directly involve and benefit local communities.

We support community-based solutions because we understand that communities have invaluable knowledge and expertise that is essential for the protection

and regeneration of the ecosystems in which they live. We favour natural climate solutions that harness Mother Nature to protect and restore natural ecosystems, enhance carbon storage and reduce greenhouse gas emissions. And we believe that addressing both marine and terrestrial ecosystems is vital because of how inextricably linked their roles are in sustaining biodiversity and ecological balance.

In East Africa, our partnerships with organisations like the Maasai Mara Wildlife Conservancies Association, the Kenya Wildlife Conservancies Association, Basecamp Explorer Foundation and Nawiri Foundation are helping preserve biodiversity, strengthen community-led conservation efforts, and promote sustainable livelihoods through natural resource management and ecotourism. In India, partners such as Dakshin Foundation and the Foundation for Ecological Security are working to protect and restore critical ecosystems by empowering coastal and rural communities, supporting sustainable resource management and strengthening local stewardship of natural landscapes.







The Wildlife Tourism College of Maasai Mara.

The Wildlife Tourism College of Maasai Mara empowers Maasai youth to become conservation leaders.





## Thriving East African landscapes

East Africa's critical ecosystems – including the Greater Maasai Mara, Amboseli, Serengeti, Ruaha and Selous – are not just home to some of Africa's most iconic wildlife but also essential for biodiversity, climate stability and the livelihoods of millions. However, these ecosystems face growing threats from climate change, land-use changes, rapid population growth and human-wildlife conflict, which put the land, animals and communities at severe risk.

Since 2016, H.S.H. Prince Max von und zu Liechtenstein and a group of funding partners have engaged with LGT Venture Philanthropy to promote community-led conservation in East Africa. To date, our collective investments of more than USD 16 million have enabled significant change, including the establishment of the first mixed-use conservancy in the Maasai Mara, the launch of the Wildlife Tourism College of Maasai Mara to empower Maasai youth to become conservation leaders and the creation of eco-tourism jobs that directly support conservation efforts. Jointly, we also engage in Ahueni, a consortium of impact investors enhancing transparency and quality of climate finance projects such as carbon credits. By co-developing carbon credits, Ahueni contributes to diversifying income for landowners in the Maasai Mara through additional and sustainable revenues.

In line with our 2024–2028 Thriving Communities strategy, expanding these initiatives and collaborating with other funders in Kenya, Tanzania and across more landscapes in East Africa will be a key priority for us moving forward.



### Olole Liliaram

#### **Maasai Landowner in the Maasai Mara Wildlife Conservancy**

"The Mara is my home. We love this land, and we are proud to share it with wild animals. We have received many benefits from conservation. Many of our people find employment, and we get income from the land we lease to conservancies based on the amount of land we contribute."

# Foundation for Ecological Security

Protecting ecosystems and livelihoods in rural India.

Founded in 2001, the Foundation for Ecological Security (FES) works towards the conservation of land, forest and water resources in India by empowering communities to secure access to and management of shared land and water resources known as “commons”. Collaborating with local communities, governments and other partners, FES fosters a decentralised approach to environmental management, leveraging local knowledge to design cost-effective solutions while enhancing social and economic well-being. FES also helps strengthen local governance structures and builds the capacity of community leaders to manage resources more effectively.

We began our partnership with FES in 2021 with an initial grant to help scale their innovative approach of empowering communities to take charge of their ecological resources while advocating for policies that promote environmental sustainability. FES’s

efforts have resulted in significant advancements in biodiversity conservation and community resilience, catalysing their impact on India’s ecological landscape. To date, FES has supported communities in 14 states in India and has brought over 15 million acres of commons under community governance, benefiting over 34 million people.



Powerful before-and-after image of a community intervention supported by FES in India.

### Anasuyamma's story

For 43-year-old Anasuyamma, helping her village is more than a personal commitment – it's her passion. Her in-depth understanding of agricultural livelihoods and the challenges faced by her people have led Anasuyamma to dedicate herself to a life-time of community activism.

In A Hunasenahalli, Anasuyamma's village in the South Indian state of Karnataka, mismanagement and encroachment were constant threats to the village's commons, jeopardising the livelihoods of those who depended on these land resources for farming and animal husbandry. In 2018, Anasuyamma joined Grama Parisara Abhivruddhi mathu Nirvahane Samiti – a community-based local institution formed to protect and manage the community's commons. With support from FES, she led initiatives addressing land mapping, canal repairs and revegetation to restore vital resources, ensuring that the village's future would be more sustainable.

Since then, Anasuyamma's leadership has expanded into initiatives such as the construction of a check dam, which has improved water availability and supported local agriculture. She has also worked to enhance sanitation and infrastructure, supporting families in building cattle sheds and toilets, and advocated for women's participation in decision-making and community activities.



Anasuyamma's tireless efforts have transformed her village.

Anasuyamma's tireless efforts have transformed her village. She has empowered over 200 families by improving their access to financial, social and environmental resources. In the future, she plans to continue her journey in local governance with the goal of representing women and bringing greater development to her community. ◆



FOUNDATION FOR ECOLOGICAL SECURITY



# National Geographic Pristine Seas

For the future of the oceans and the planet.



Waters near Tristan da Cunha.

Pristine Seas is a National Geographic Society initiative aimed at protecting the world's oceans by helping to establish marine protected areas (MPAs) in some of the most pristine ocean environments worldwide. These areas are like national parks of the sea, where destructive activities are limited or banned, giving marine life the opportunity to thrive. Since its inception in 2008, Pristine Seas has successfully collaborated with governments, local communities and conservation organisations to protect over 6.8 million km<sup>2</sup> of ocean, making significant strides towards its vision of safeguarding marine biodiversity and ensuring sustainable fishing practices.

LGT Venture Philanthropy's support for Pristine Seas began in 2021, making the organisation a flagship partner in our commitment to help achieve the global goal of protecting 30 % of the ocean by 2030. Pristine Seas employs a science-driven approach to conservation, conducting research and advocacy to promote the establishment of MPAs that not only protect marine life but also sustain the livelihoods of coastal communities. By emphasising the importance of healthy oceans, Pristine Seas works to raise awareness and inspire global action to conserve marine ecosystems for future generations.

### Tristan da Cunha's story

Tristan da Cunha, an archipelago about 2700 km off the coast of South Africa, is home to a rich array of unique marine life that was under significant threat from overfishing and pollution. In 2017, Pristine Seas launched an expedition to Tristan da Cunha and spent 20 days on the archipelago conducting flora and fauna, and deep-sea habitat surveys. In 2020,



Fish stocks have started to recover and seabird populations are on the rise.

after several months of close collaboration with the Tristan da Cunha government, Pristine Seas used scientific data and imagery from the expedition to help establish a 700 000 km<sup>2</sup> marine protected area – one of the largest MPAs in the world.

The MPA is now a sanctuary where marine life can thrive, and sustainable fishing practices ensure the island's resources are carefully managed. Local residents, traditionally reliant on fishing, are now part of the solution, working with conservationists to protect the waters while benefiting from the long-term health of the ecosystem.

Since the MPA's creation, fish stocks have started to recover and seabird populations are on the rise. The initiative has become a model for other remote island communities looking to preserve their marine ecosystems, showing that conservation can be both sustainable and economically beneficial. ♦

 NATIONAL  
GEOGRAPHIC  
**PRISTINE SEAS**

# LGT Impact Fellowship

Empowering talent to drive social impact.

The LGT Impact Fellowship programme, established by LGT Venture Philanthropy in 2009, is a capacity-building initiative designed to complement the financial and strategic support we offer our partner organisations. By matching mid-career professionals with the organisations we support, the fellowship strengthens the operational and strategic capabilities of our portfolio organisations to maximise their impact.



## Joshua Ayuo

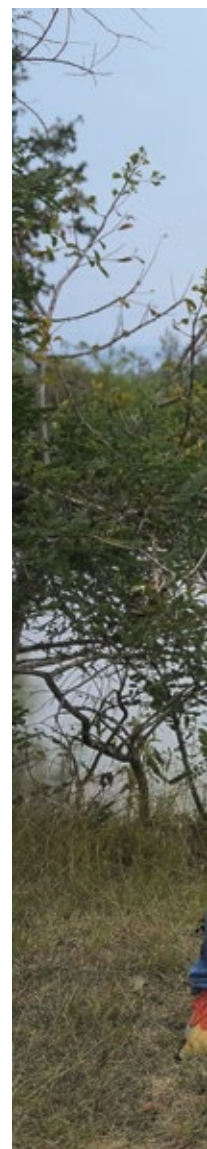
**Former LGT Impact Fellow, Kenya Wildlife Conservancies Association Programmes Manager**

"During my LGT Impact Fellowship, I worked with the Maasai Mara Wildlife Conservancies Association to strengthen impact measurement through a new 'lean data' approach and supported the securing of a USD 2 million grant from USAID during the pandemic. Participating in the Fellowship Programme was instrumental in helping me start a new career in conservation. Today, I am working with the Kenya Wildlife Conservancies Association as Programmes Manager, and I even managed and mentored another LGT Impact Fellow last year!"

The LGT Impact Fellowship team supports partner organisations with the recruitment and initial screening of candidates, and helps ensure that the selected fellow is the right match for the organisation. Each fellow commits to a full time, 12-month engagement with the host organisation, sharing knowledge and supporting the organisation's growth.

For fellows, the programme offers a unique chance to apply their professional skills meaningfully while gaining hands-on experience in sectors they are passionate about. In turn, our partner organisations benefit from the expertise, energy and commitment of highly motivated professionals eager to contribute across a broad range of areas, including communications, fundraising, finance, strategy and project management.

As of mid-2024, the LGT Impact Fellowship programme had placed a total of 213 fellows, with men and women equally represented. 47 % of the fellows were from the Global South. Collectively, our fellows have contributed 345 920 hours of work to partner organisations. The average fellow brings seven years of work experience, reinforcing the fellowship's reputation as a robust, mutually beneficial model for driving impact across sectors.







The 2024 cohort of the LGT Impact Fellowship pose for a photo during the fellowship kick-off workshop in Machakos, Kenya.

### LGT Impact Fellow profile: Amé Lazaridis

Amé Lazaridis, a lawyer with a background in humanitarian law, has built her career in business development in South Africa, Spain and the Netherlands. Her passion for conservation and her desire to make a meaningful impact led her to join the LGT Impact Fellowship in 2023. She sought out this opportunity not only to support a cause she cares deeply about, but also to connect with a community of like-minded professionals.

Amé did her fellowship at African Parks, where she was responsible for leading the organisation's newly established online fundraising department. In addition to her work on online initiatives, she collaborated closely with the marketing team to strengthen the overall fundraising stewardship efforts.

“  
**The fellowship gave me immense joy, because I knew that my work was making a positive difference for Africa and the world.**



Amé Lazaridis, LGT Impact Fellow at African Parks

For Amé, working with African Parks' dynamic and passionate team proved incredibly rewarding. And the chance to holistically support the ecological, socio-political and financial sustainability of the protected areas managed by African Parks made her efforts even more fulfilling. Amé says the fellowship gave her immense joy, because she knew that her work was making a positive difference for Africa and the world.

### LGT Impact Fellow profile: Siddharth Sivashankar

Siddharth Sivashankar, a finance graduate with a background in international finance, has always been driven by his commitment to supporting impact-focused initiatives. He began his career at Aurigin, an investment banking platform focused on deal origination, where he advised over 100 impact entrepreneurs and investors, helping them connect with the right institutional funding.

Joining the LGT Impact Fellowship was a natural next step for Siddharth, giving him the chance to apply his expertise in finance and business for an organisation that aligned with his values. His fellowship placement was with our partner Quest Alliance, a



Siddharth Sivashankar, LGT Impact Fellow at Quest Alliance

“

**I was able to witness first-hand how my work could help transform education and empower learners across India.**

non-profit organisation focused on transforming learning ecosystems through education technology, capacity building and collaboration.

Siddharth's fellowship at Quest Alliance in India allowed him to help transform learning ecosystems by building financial and analytical frameworks that improve transparency and control. Siddharth helped design processes for performance measurement, cost analysis and long-term financial planning, all aimed at bolstering Quest Alliance's capacity to deliver its mission of advancing 21<sup>st</sup> century skills for youths and educators.

For Siddharth, the opportunity to contribute directly to Quest Alliance's youth programmes was especially rewarding. By applying his skills in a way that supported both operational efficiency and mission-driven impact, he was able to witness first-hand how his work could help transform education and empower learners across India.



# Learning and creating impact together

At LGT Venture Philanthropy, we believe that working in partnership is crucial if we want to scale impact, drive systemic change and continuously learn from others.

Our partnerships span sectors and geographies, uniting like-minded funders and organisations committed to finding lasting solutions to global challenges.

The following is a selection of our current partnerships.

## Summa Foundation and the Sinding and Indahl family offices

### Partnering in East Africa

LGT Venture Philanthropy has partnered with Summa Foundation and the Sinding and Indahl family offices since 2016 to drive community-led conservation in Kenya and Tanzania. Together with our local partner organisations like the Maasai Mara Wildlife Conservancies Association, Basecamp Explorer Foundation and Nawiri Foundation, we engage with communities to steward landscapes and preserve critical ecosystems. Among other things, this collaboration has supported the creation of Africa's first mixed-use conservancy, the Pardamat Conservation Area, benefiting over 270 000 people. Together with our local partners, we have also increased vocational training opportunities for youth in the Mara through the new Wildlife Tourism College, and contributed to creating sustainable jobs and livelihood opportunities in ecotourism, directing profits to conservation efforts. Additionally, the One Mara Carbon Project plans to introduce carbon credits as a new revenue stream for Maasai communities.

## Dasra, GivingPi and LGT Wealth India Expanding family philanthropy in India

In 2024, we deepened our relationship with Dasra through the launch of our partnership with GivingPi, India's first and largest family philanthropy network, which brings together philanthropic families to collaborate and scale their impact. Our Chairman and Founder H.S.H. Prince Max von und zu Liechtenstein's participation in GivingPi's Founders Circle underscores our commitment to this initiative. Together with Dasra, GivingPi and LGT Wealth India, we will explore new avenues for family philanthropy in the areas of health, education and the environment, while identifying opportunities to scale proven, community-based solutions in India.



## Deval Sanghavi

### Co-Founder & Partner, Dasra

"We are thrilled to welcome His Serene Highness Prince Max von und zu Liechtenstein to the GivingPi Founders Circle and to launch our partnerships with LGT Venture Philanthropy and LGT Wealth India. I'm excited about our shared ambition to scale philanthropic impact and achieve real progress in India and globally over the next few years."

## Co-Impact

### Scaling educational, health and environmental solutions

Our collaboration with Co-Impact is grounded in our shared focus on driving systemic change, particularly in India, where we jointly engage with organisations such as ARMMAN, Foundation for Ecological Security (FES), Living Landscapes and Common Ground on issues as diverse as maternal and child health, and landscape regeneration. For example, in 2022 we jointly supported the launch of Living Landscapes to address rural ecological health and climate action through community land governance, offering foundational funding, capacity building and strategic support. As early partners to Living Landscapes, we set the foundations to unlock additional funding, for example, from the Skoll Foundation, Omidyar Foundation and Target Foundation, and deliver on its vision of thriving landscapes and resilient local communities across India. At the Skoll World Forum in Oxford in April 2024, we co-convened a peer and partner discussion on barriers to scaling health solutions, featuring insights from innovators and funders on the role of governments and cross-sector collaboration in building resilient community health systems.

## Clarmondial and Encourage Capital

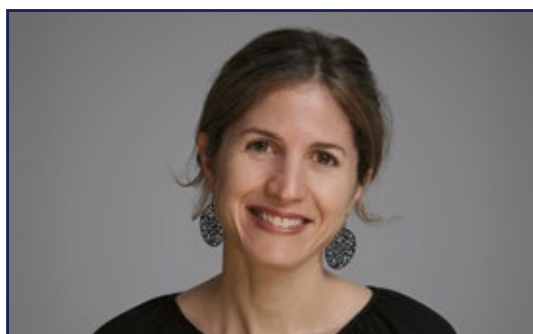
### Dialling up nature and climate financing

In partnership with Clarmondial and Encourage Capital, we co-hosted an event during the United Nations General Assembly and Climate Week NYC 2024 titled \$200 Trillion and Beyond: How Can Catalytic Capital Address the Missing Climate & Nature Trillions? Together with over one hundred leaders across various sectors, we explored opportunities to mobilise financing for climate and nature solutions, as well as the pivotal role of philanthropic capital in advancing innovative, sustainable financing alternatives.

## Big Bang Philanthropy

### Collaborative philanthropy in action

Big Bang Philanthropy is a global group of like-minded funders working together to identify and garner support for organisations with the capacity to deliver large-scale systemic change. The network has



## Olivia Leland

### Founder and CEO, Co-Impact

"As a global philanthropic collaborative, we share LGT Venture Philanthropy's philosophy of bringing together local changemakers and funders from around the world to make systems stronger and more inclusive. Our work together supporting Common Ground in India is one such example demonstrating what is possible when collaborative philanthropy provides large, flexible grants and strategic support to locally rooted partners who know their system best."

been invaluable in leveraging collective insights from other experienced funders in areas such as due diligence, strategic support and guidance to enhance funding strategies and maximise impact. In 2024, we jointly initiated the development of a robust database that consolidates news, updates and other member-related information, enabling Big Bang Philanthropy to foster collaboration, streamline information exchange and further amplify our collective impact.

## Asian Venture Philanthropy Network (AVPN)

### Advancing philanthropy in Asia

Our partnership with AVPN reflects our shared commitment to fostering collaborative and scalable impact through innovative philanthropy. In 2024, we actively participated in the AVPN Global Conference in Abu Dhabi, engaging with like-minded funders, non-profits and partners to explore emerging trends such as climate resilience and trust-based philanthropy. Several of our portfolio organisations are featured on AVPN's Deal Share platform, enhancing their visibility and access to global funding opportunities.

# Portfolio overview

| Organisation                                 | Year founded | Partner since | Countries/regions present  | Goal of the organisation  |
|--|--------------|---------------|--|---|
| <b>Education</b>                             |              |               |  |   |
| <b>Educate Girls</b>                         | 2007         | 2011          | India (4/28 states)  | Increasing school attendance and improving learning outcomes of children.   |
| <b>Harambee Youth Employment Accelerator</b> | 2011         | 2019          | South Africa, Rwanda   | Creating solutions to tackle youth unemployment.  |
| <b>Instiglio</b>                             | 2012         | 2024          | Global   | Impact advisory to major donors (eg multilaterals and bilaterals) and governments in low- and middle-income countries to increase the impact of development aid and government spending.  |
| <b>Kaivalya</b>                              | 2008         | 2023          | India (15/28 states)   | Improving the quality of public education by developing education leadership, improving processes and leveraging technology.  |
| <b>Lively Minds</b>                          | 2008         | 2022          | Ghana, Uganda  | Developing scalable, low-cost, community-run play groups and empowering mothers to provide nurturing care at home.  |
| <b>The Nudge Institute</b>                   | 2015         | 2021          | India  | Boosting urban youth skill sets, rural family livelihoods and innovation in the development sector.   |
| <b>Peepul</b>                                | 2017         | 2024          | India (3/28 states)  | Partnering with state governments to transform learning in schools by training teachers and through academic, administrative and institutional reforms.   |
| <b>Quest Alliance</b>                        | 2008         | 2023          | India (12/28 states)   | Imparting 21st-century job skills to young people in schools and skilling institutes to prepare them for employment.  |
| <b>SmartStart</b>                            | 2015         | 2020          | South Africa   | Expanding access to quality early learning in low-income communities while creating employment opportunities, primarily for women.  |
| <b>Health</b>                                |              |               |  |   |
| <b>AMP Health</b>                            | 2015         | 2020          | Central African Republic, Chad, Congo, Ghana, Guyana, Liberia, Malawi, Mali, Mauritania, Mozambique, Nigeria, Togo, Zambia | Improving public health leadership and management capabilities of Ministry of Health teams.   |
| <b>ARMMAN</b>                                | 2008         | 2020          | India (15/28 states)   | Leveraging mobile health solutions to improve maternal and child health in low-income communities through timely delivery of preventive health information, and building health workers' capacities to deliver quality health services. |
| <b>Financing Alliance for Health</b>         | 2016         | 2020          | Central African Republic, Ethiopia, Kenya, Mali, Senegal, Sierra Leone, Zambia   | Advising Ministries of Health teams to develop sustainable financing strategies for community health.   |
| <b>Last Mile Health</b>                      | 2007         | 2018          | Ethiopia, Liberia Malawi, Sierra Leone   | Embedding high-performing community health workers in underserved rural communities and improving access to health for all.   |
| <b>Living Goods</b>                          | 2007         | 2024          | Kenya, Uganda, Burkina Faso  | Saving lives at scale by supporting digitally empowered community health workers in collaboration with governments and other partners.  |
| <b>mothers2mothers</b>                       | 2001         | 2009          | Angola, Ghana, Kenya, Lesotho, Malawi, Mozambique, Nigeria, South Africa, Tanzania, Uganda, Zambia                         | Empowering and deploying HIV+ women to deliver healthcare through a peer model.   |
| <b>Muso</b>                                  | 2005         | 2021          | Mali, Côte d'Ivoire, Zambia  | Providing timely access to healthcare in marginalised communities.  |



| Organisation  | Year founded | Partner since | Countries/regions present   | Goal of the organisation   |
|---|--------------|---------------|---|--|
| <b>The Antara Foundation</b>                                | 2013         | 2021          | India (1/28 states)   | Increasing collaboration in community health services to provide better primary healthcare to at-risk mothers and children.  |
| <b>Environment</b>  |              |               |   |  |
| <b>African Parks</b>  | 2000         | 2022          | 22 parks in 12 countries: Angola, Benin, the Central African Republic, Chad, the Republic of the Congo, the Democratic Republic of the Congo, Malawi, Mozambique, Rwanda, South Sudan, Zambia, Zimbabwe | Managing and reviving critical but degraded protected areas through public-private partnership.  |
| <b>Ahueni</b>   | 2021         | 2021          | Kenya   | Developing carbon assets to protect biodiversity, sustain community livelihoods and offset carbon emissions.   |
| <b>Basecamp Explorer Foundation (BCEF)</b>                  | 2010         | 2016          | Kenya   | Supporting ecosystem restoration and sustainable livelihoods through a consortium of 19 local partners in the Maasai Mara, northern Kenyan coast and Samburu.                          |
| <b>Dakshin Foundation</b>                                   | 2008         | 2023          | India (5/28 states)   | Promoting inclusive marine conservation models that restore coastal and marine ecosystems while supporting the livelihoods of artisanal fishing communities.                           |
| <b>Foundation for Ecological Security (FES)</b>             | 2001         | 2021          | India (14/28 states)  | Empowering local communities to secure land rights, strengthen natural resource governance, promote sustainable livelihoods and restore ecosystems.                                    |
| <b>Kenya Wildlife Conservancy Association (KWCA)</b>        | 2013         | 2021          | Kenya   | Advocating for communities' and conservancies' interests as the national umbrella body for conservancies.  |
| <b>Living Landscapes</b>                                    | 2022         | 2022          | India (8/28 states)   | Bringing together NGOs, sector platforms and governments for systemic change in landscape restoration and improved livelihoods.  |
| <b>Maasai Mara Wildlife Conservancy Association (MMWCA)</b> | 2013         | 2020          | Kenya   | Advocating for communities in the Greater Mara ecosystem as the regional association body for community-led conservation.  |
| <b>Nature4Water Facility</b>                                | 2022         | 2022          | Global  | Scaling proven community- and nature-based watershed solutions to improve urban water security. Nature4Water is an initiative of The Nature Conservancy.                               |
| <b>Nawiri Foundation</b>                                    | 2019         | 2023          | Tanzania, Kenya, Uganda   | Developing a community-led, sustainable funding mechanism for conservation efforts to ensure both local communities and the Mara ecosystem thrive.                                     |
| <b>National Geographic Pristine Seas</b>                    | 2008         | 2021          | Global  | Driving the establishment of marine protected areas (MPAs) globally as a National Geographic Society initiative.   |
| <b>Saruni Basecamp</b>                                      | 1998         | 2017          | Kenya   | Responsible tourism operator in the Mara and Samburu ecosystems supporting local communities and benefiting wildlife.  |
| <b>Synchronicity Earth</b>                                  | 2009         | 2024          | Global  | Employing a pooled fund model to address neglected conservation priorities, focusing on protecting and restoring nature in some of the world's most biodiverse yet endangered regions. |



Dakshin Foundation supports sea turtle monitoring and conservation in India.

## Imprint

### Image credits

Cover Page: ARMMAN; National Geographic  
Pristine Seas

Page 2: Last Mile Health

Pages 4–5: LGT Private Banking

Page 6: Living Goods

Page 7: Chandrika Bahadur; Justus Raepple;  
Reynir Indahl

Page 8: Elliott Donnelley II; Archish Gupta;  
Lilian Kahara

Page 9: Last Mile Health

Page 10: Isis Nyong'o Madison

Page 11: Maasai Mara Wildlife Conservancies  
Association; Ahueni

Pages 12–13: Educate Girls

Page 14: LEAP

Page 17: Educate Girls

Page 18: LGT Venture Philanthropy

Page 19: Harambee Youth Employment Accelerator

Page 21: Lively Minds

Pages 22–23: Harambee Youth Employment  
Accelerator

Pages 24–25: LGT Venture Philanthropy

Page 26: Living Goods

Page 29: The Antara Foundation; Ari Johnson

Pages 30–31: ARMMAN

Page 33: Financing Alliance for Health

Page 35: African Parks

Page 36: LGT Venture Philanthropy

Page 37: African Parks

Pages 38–39: LGT Venture Philanthropy

Pages 40–41: Foundation for Ecological Security

Pages 42–43: Pristine Seas by Alex Verville

Page 44: Joshua Ayuo

Page 45: LGT Venture Philanthropy

Page 46: Amé Lazaridis

Page 47: Siddharth Sivashankar

Page 48: Deval Sanghavi

Page 49: Olivia Leland

Page 52: Dakshin Foundation

### Media relations

Cecilia Waldburg

info@lgtvp.com



**Refutura FSC®** Recycling, matt, ISO white 100,  
100% recycled paper, carbon neutral, Blue Angel

## Disclaimer

This publication is produced by LGT Venture Philanthropy Foundation (hereafter "LGT VP"). The contents of this publication have been prepared by our staff and are based on sources of information we consider to be reliable. However, we cannot provide any undertaking or guarantee as to it being correct, complete and up to date. The circumstances and principles to which the information contained in this publication relates may change at any time. Once published, therefore, the information shall not be understood as implying that no change has taken place since publication or that it is still up to date. The information in this publication does not constitute an aid for decision making in relation to financial, legal, tax or other consulting matters, or

should decisions be made on the basis of this information alone. It is recommended that advice be obtained from a qualified expert. We disclaim without qualification all liability for any loss or damage of any kind, whether direct, indirect or consequential, which may be incurred through the use of this publication. Venture philanthropy is an approach to philanthropic giving that uses concepts and techniques from the venture capital industry to build strong social organizations by providing them with both financial and non-financial support in order to increase their societal impact. It often also means to engage in emerging markets, i.e. in jurisdictions which may not be politically, financially or organizationally stable. Therefore, the influence on an engagement can be substantially restricted and not guaranteed.



